





CEDAR RAPIDS MURAL TRAIL SOCIETY

ATTENTION ARTISTS:
REQUEST FOR QUALIFICATIONS
CAN YOU SEE YOUR MURAL HERE?



Exterior Location: Above south Alleyway entrance on 3rd Street SE in downtown Cedar Rapids, Iowa, located between 2nd Avenue and 3rd Avenue SE. See additional location images at <http://picasaweb.google.com/113115274859098903089/mural101location>. **Overall Dimensions of Mural:** 18 feet Tall x 22 feet Wide

I. PROJECT INTENT

The **Cedar Rapids Mural Trail Society** (crMTS) seeks to commission an artist/artist team to develop a piece of public art to be installed in the space shown above. As the first of many pieces of public art to be commissioned for the Mural Trail, we are looking for:

- An artist/artist team that can involve community members in the creative process
- Artwork that will unfold our history while creating excitement and learning opportunities for the community

This artwork should:

- Excite the community to learn more about Cedar Rapids' history and culture
- Inspire people of all ages to remember the past while leaving a legacy promoting community spirit and pride
- Create visual experiences while revitalizing the area's streetscapes

The artwork must be durable, low maintenance and appropriate to the location. The artist should take into consideration how the public will be viewing this piece of art: walking, biking or driving past the work as well as people standing across the street to view it. The goal is for the artwork to be viewed both during the day as well as in the evening using appropriate lighting.

In addition, it is important to note that crMTS uses the word "mural" in a much broader sense as it can take many forms. Examples of media include but are not limited to: paint, metal, photography, multi-dimensional bias relief, and mixed media. Although crMTS does not endorse any restrictions on any





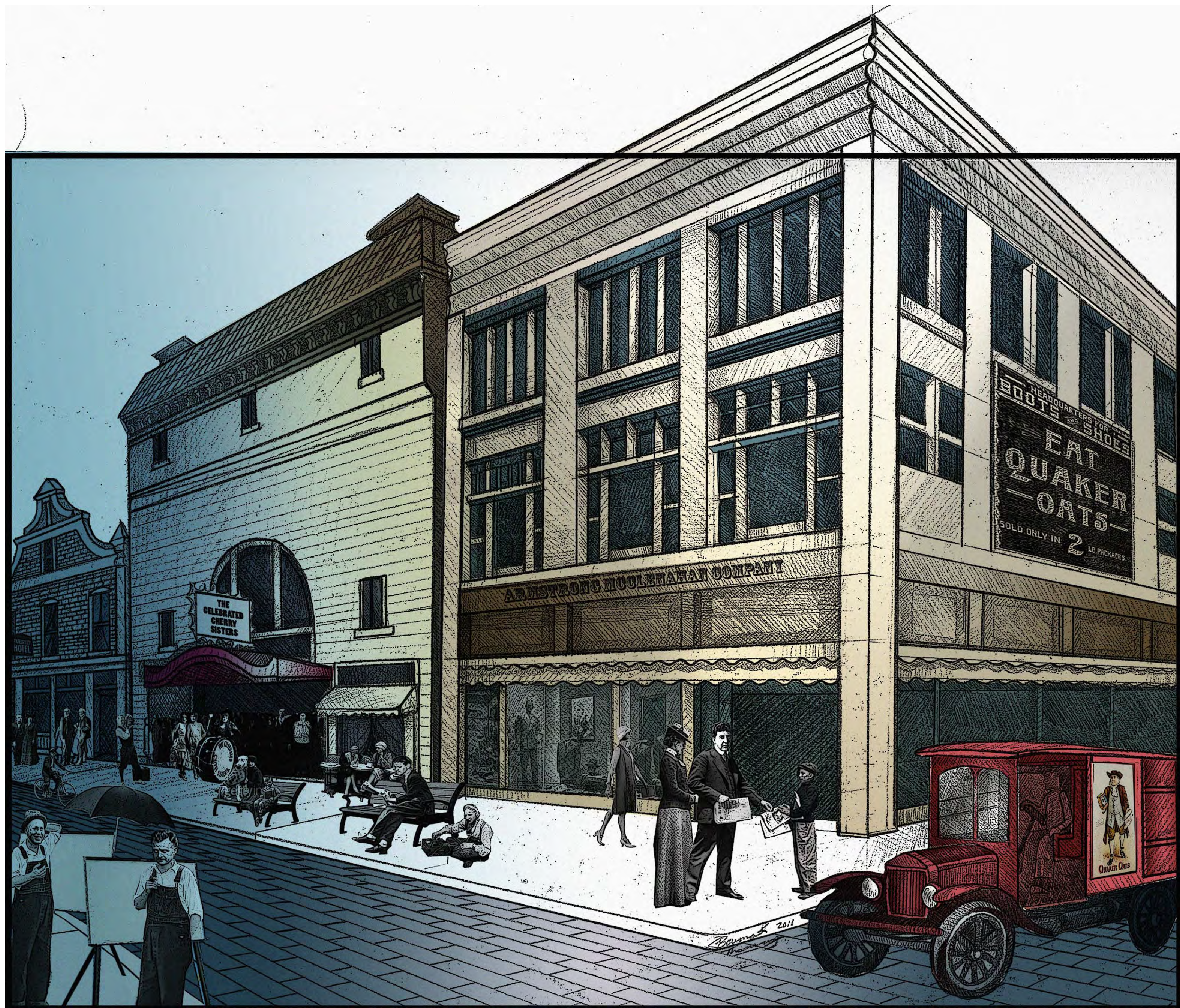


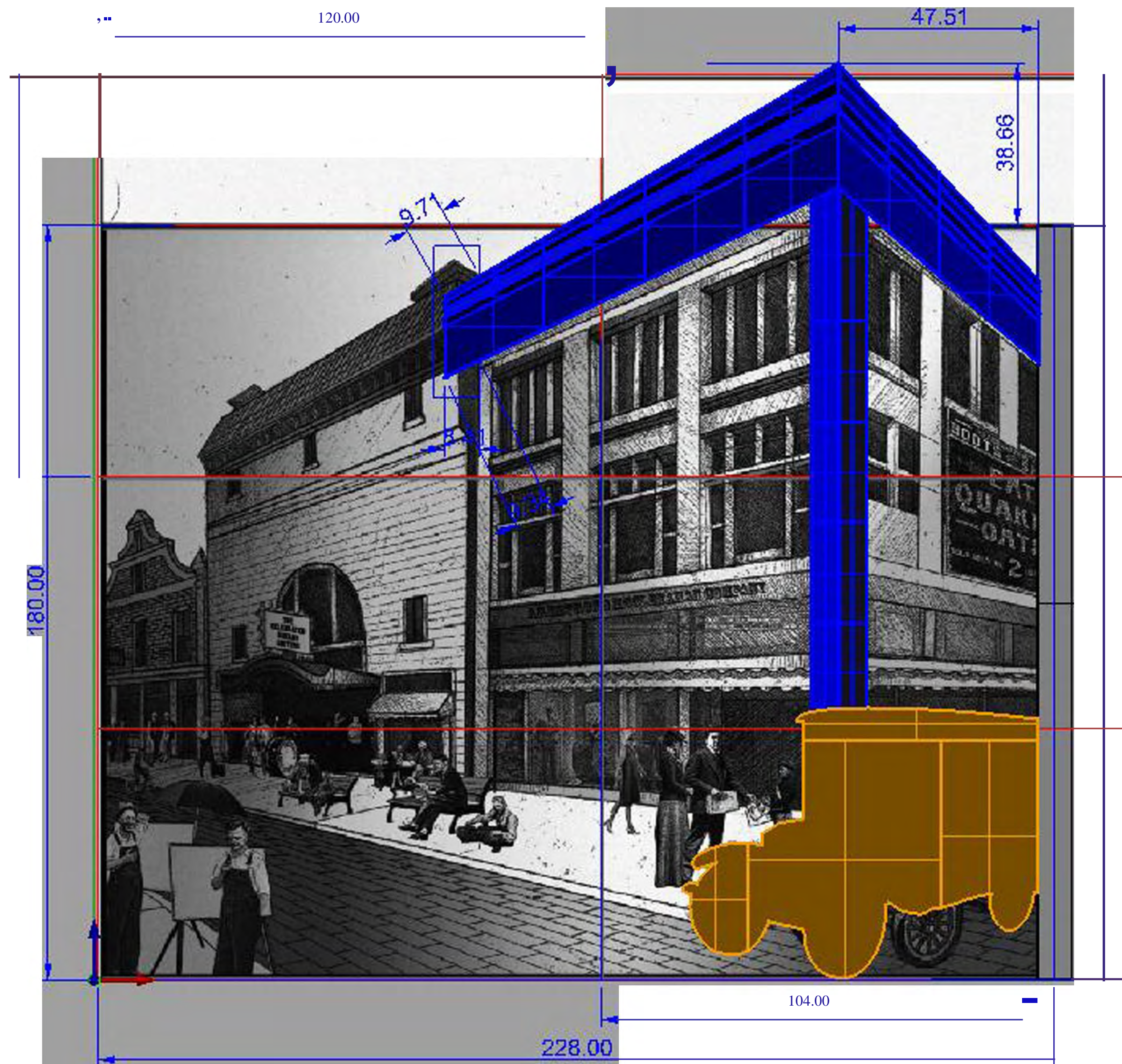
Writer Paul Engle

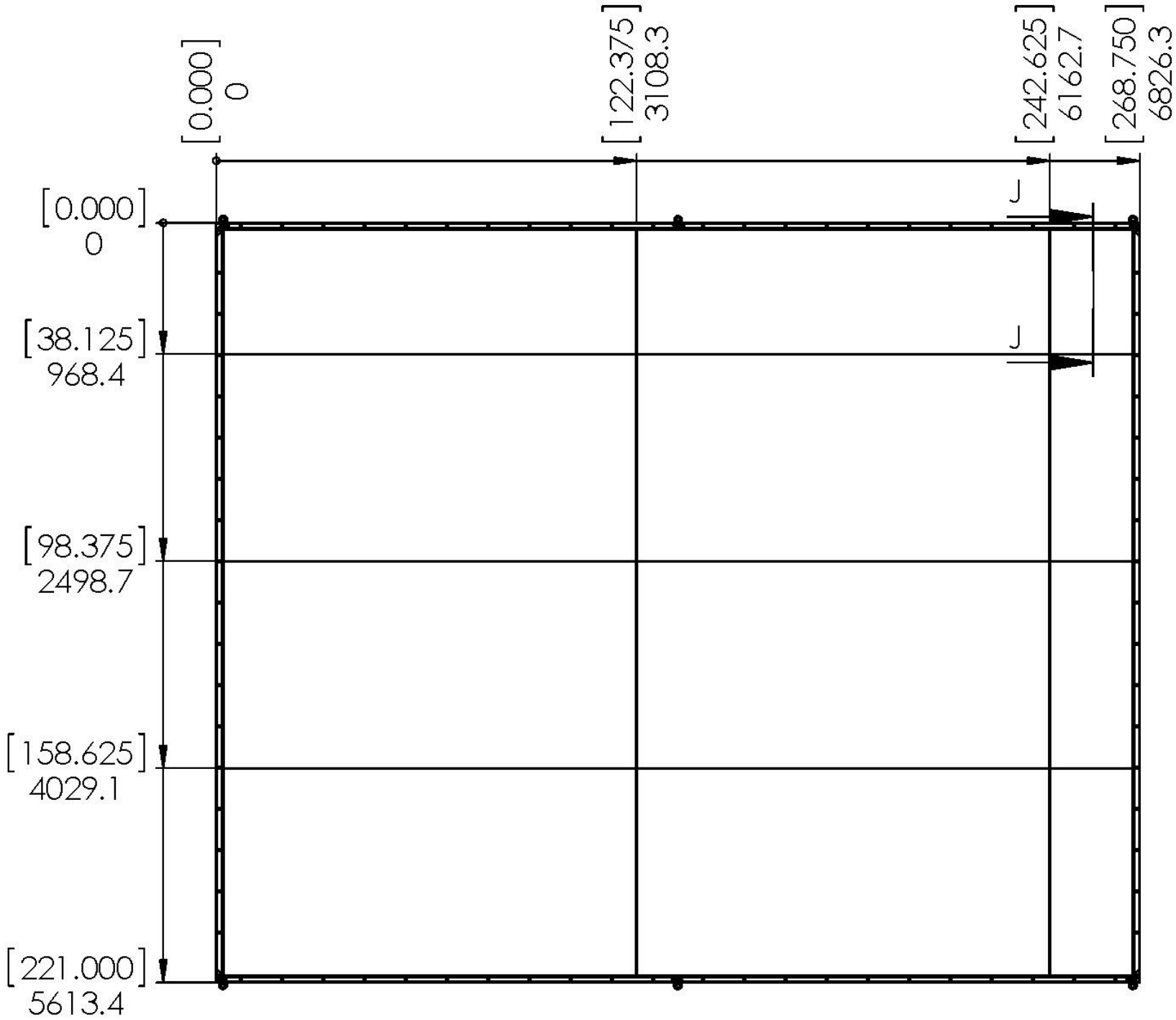




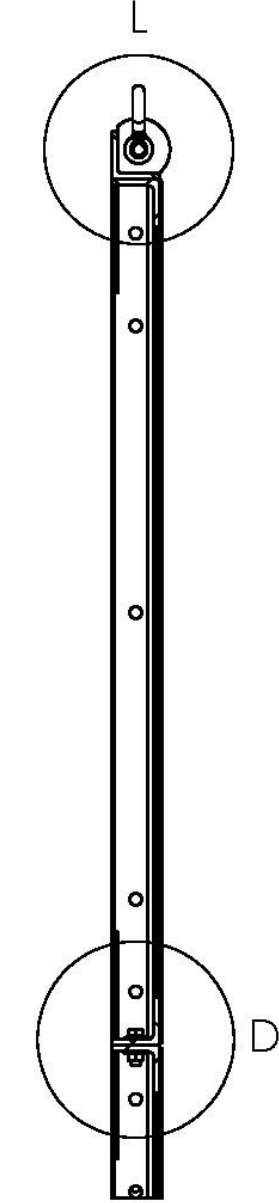






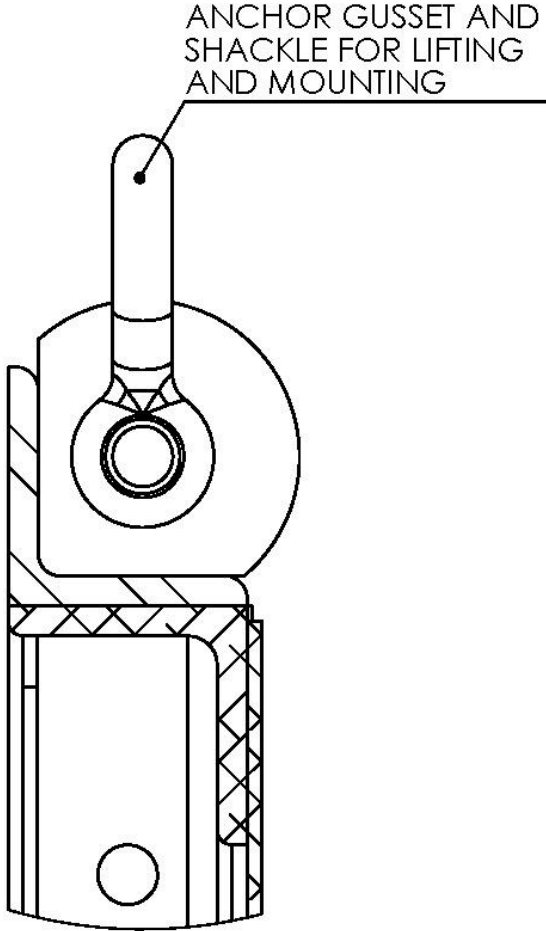


ROC MURAL ASSEMBLY, FRONT VIEW:
SCALE: 1:50

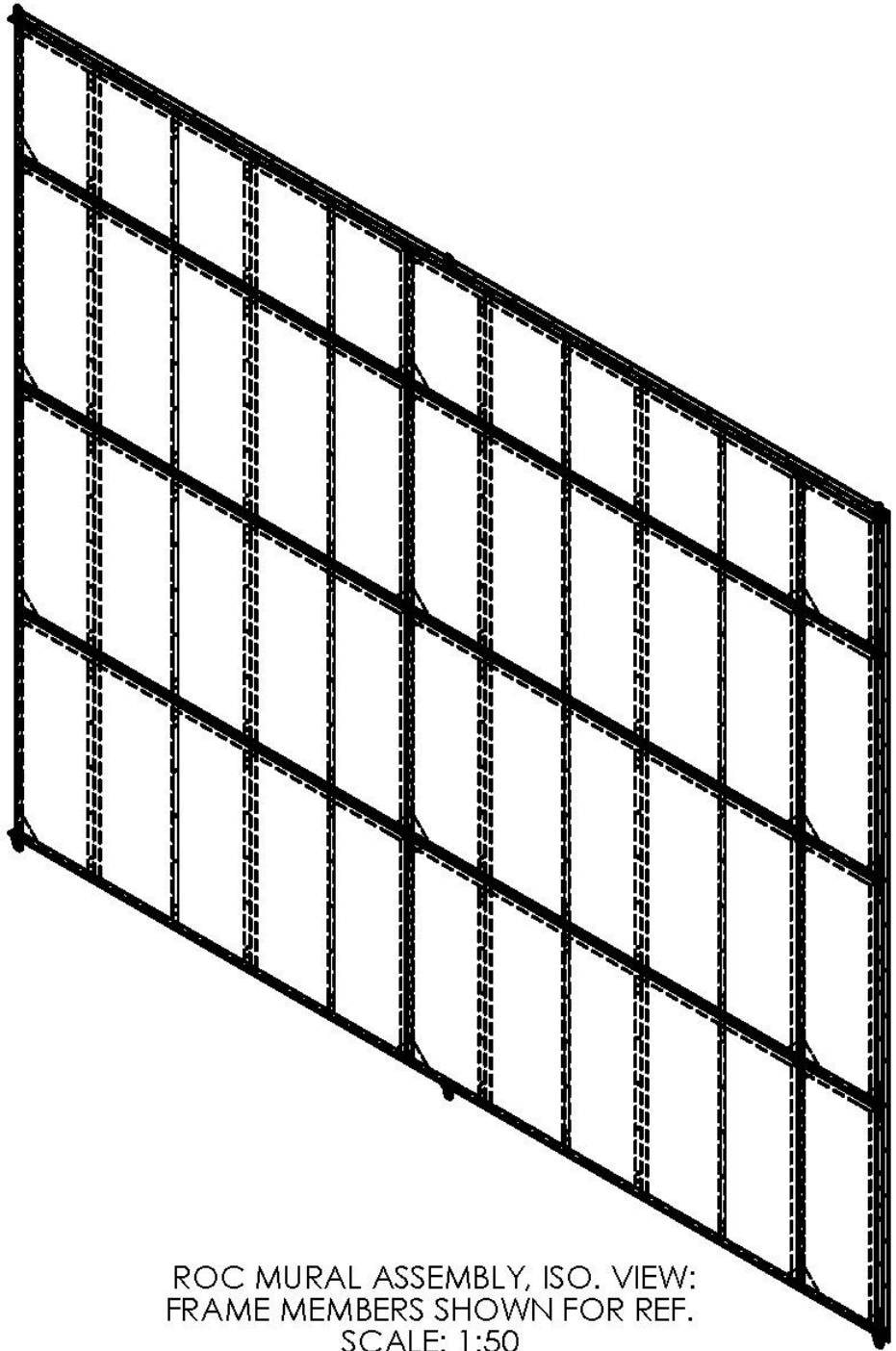
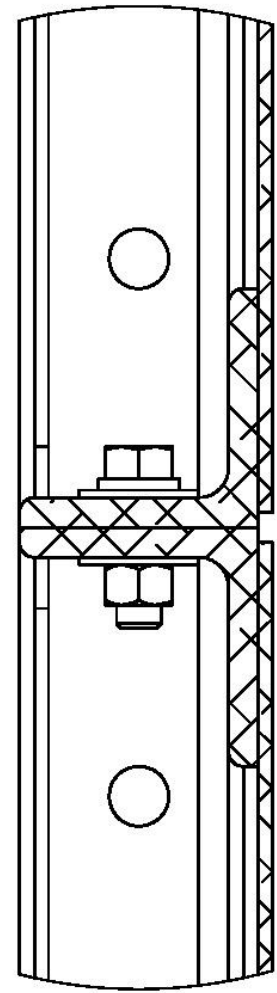


SECTION J-J
SCALE 1 : 10

DETAIL L
SCALE 1 : 2



DETAIL D
SCALE 1 : 2



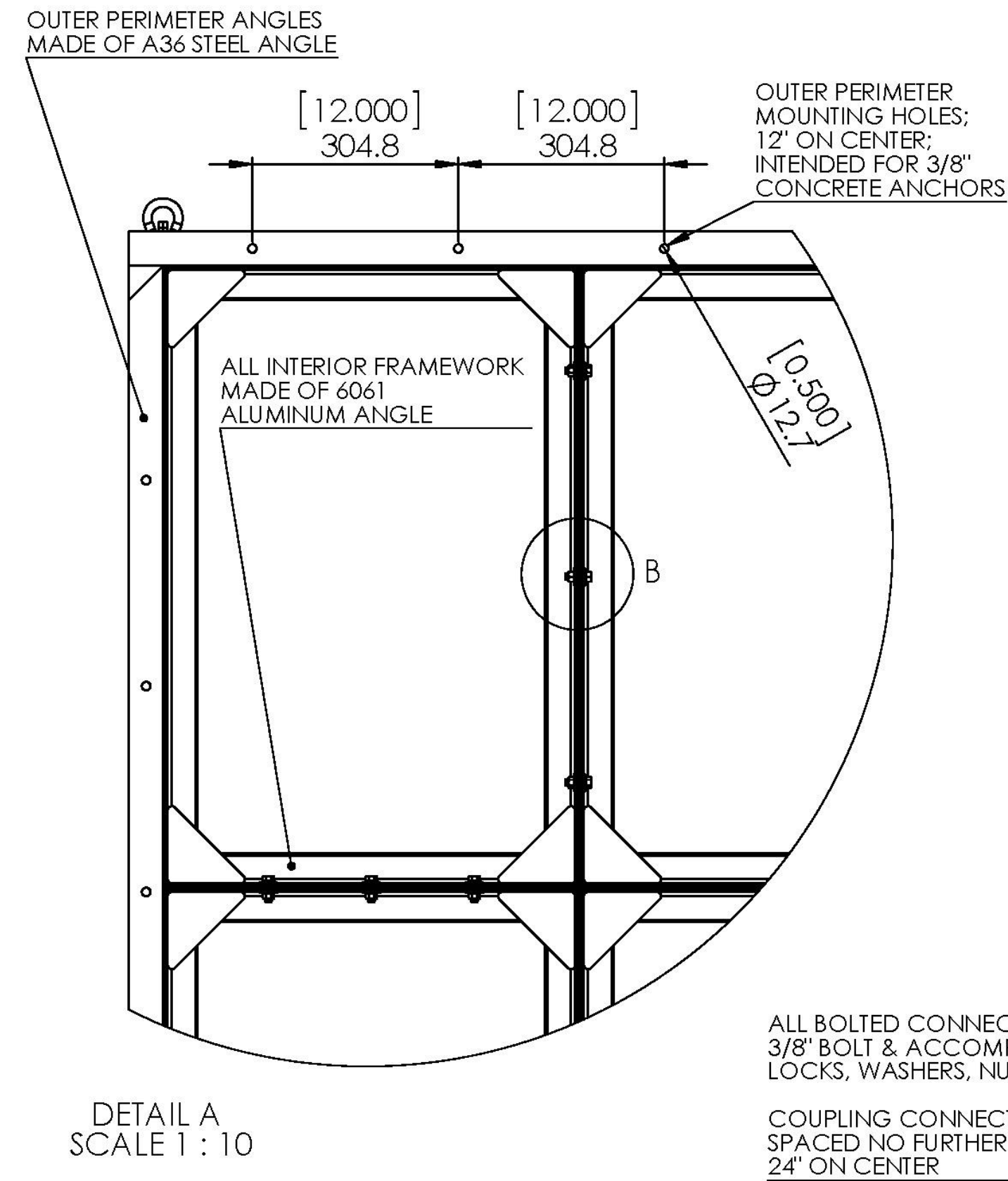
ROC MURAL ASSEMBLY, ISO. VIEW:
FRAME MEMBERS SHOWN FOR REF.
SCALE: 1:50

PART WEIGHT:

THAMMAVONG ARTWORKS STD TOL'S UNLESS NOTED				SEE PRINT FOR UNSPECIFIED TOL'S			
BLANKS		VARIOUS		MFG DRAWING STD'S: ANSI Y14.5M MFG DIM'S ARE FOR REFERENCE ONLY MFG DWGS COPIES ARE UNCONTROLLED SEE CUSTOMER DWG FOR KEY FEATURES			
LASER	PUNCH	SHEAR	SAW				
				TOL 1	TOL 2		
CO. CRMTS				DESCRIPTION			
MAT'L 6061 T6 ALU.				CRMTS ROC MURAL ASSEMBLY			
DWN BY B. THAMMAVONG				DWG NUMBER		REV.	
DATE 6/1/2011				ROC-MA-000		A	
SCALE AS NOTED		REV. DATE 6/1/2011		THAMMAVONG ART NO.		REV.	
SHEET 1 OF 3				ROC-MA-000		A	

UNITS: MM [INCH]
TOL.: X.XXX =1MM;[X.XXX] = 0.03937"

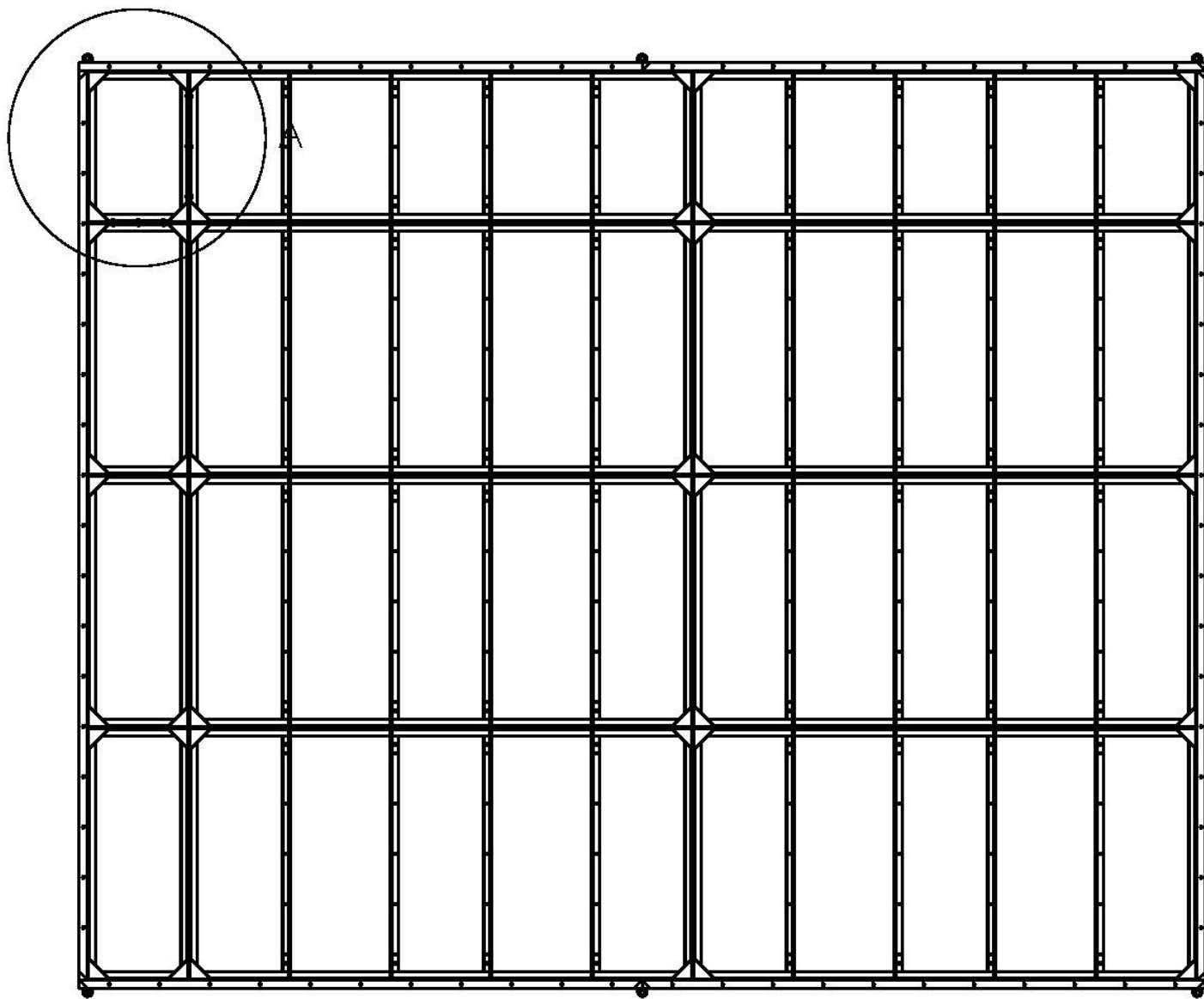
- NOTES:
- MURAL COMPOSED OF:
1. 4 DIFFERING SIZES OF MODULAR 10 GA ALUMINUM PANELS SUPPORTED BY SKELETAL FRAME STRUCTURE.
 2. INTERIOR FRAME STRUCTURE COMPOSED OF 1/4"X2"X2" ALUMINUM ANGLE WELDED AND BOLTED.
 3. PERIMETER FRAME STRUCTURE COMPOSED OF A36 STEEL ANGLE
 4. ALL MODULAR FRAME BOLTING CONNECTIONS COUPLED BY 3/8" BOLTING HARDWARE
 5. PREFERED WALL MOUNTING METHOD (MASONRY SUBSTRATE): DIRECT MOUNT VIA OUTER PERIMETER MOUNT HOLES (12" O.C.); UTILIZING REDHEAD A6 EPOXY AND 3/8" CONCRETE WEDGE ANCHORS
 6. SECONDARY WALL MOUNTING METHOD (HOLLOW SUBSTRATE): DIRECT MOUNT VIA OUTER PERIMETER MOUNT HOLES (12" O.C.); UTILIZING REDHEAD 3/8" TOGGLE HOLLOW WALL ANCHORS
 7. AUXILARY WALL MOUNTING METHOD (UNSUTABLE DIRECT MOUNT SUBSTRATE): SUSPENDED BY CHAIN FROM CUSTOM ANCHOR POINTS ATTACHED ON ROOF AND LOWER CONCRETE SUPPORT BEAM



ALL BOLTED CONNECTIONS:
3/8" BOLT & ACCOMPANYING
LOCKS, WASHERS, NUT

COUPLING CONNECTIONS
SPACED NO FURTHER THAN
24" ON CENTER

DETAIL B
SCALE 1 : 2



ROC MURAL ASSEMBLY, BACK. VIEW:
FRAME MEMBERS SHOWN FOR REF.
SCALE: 1:50

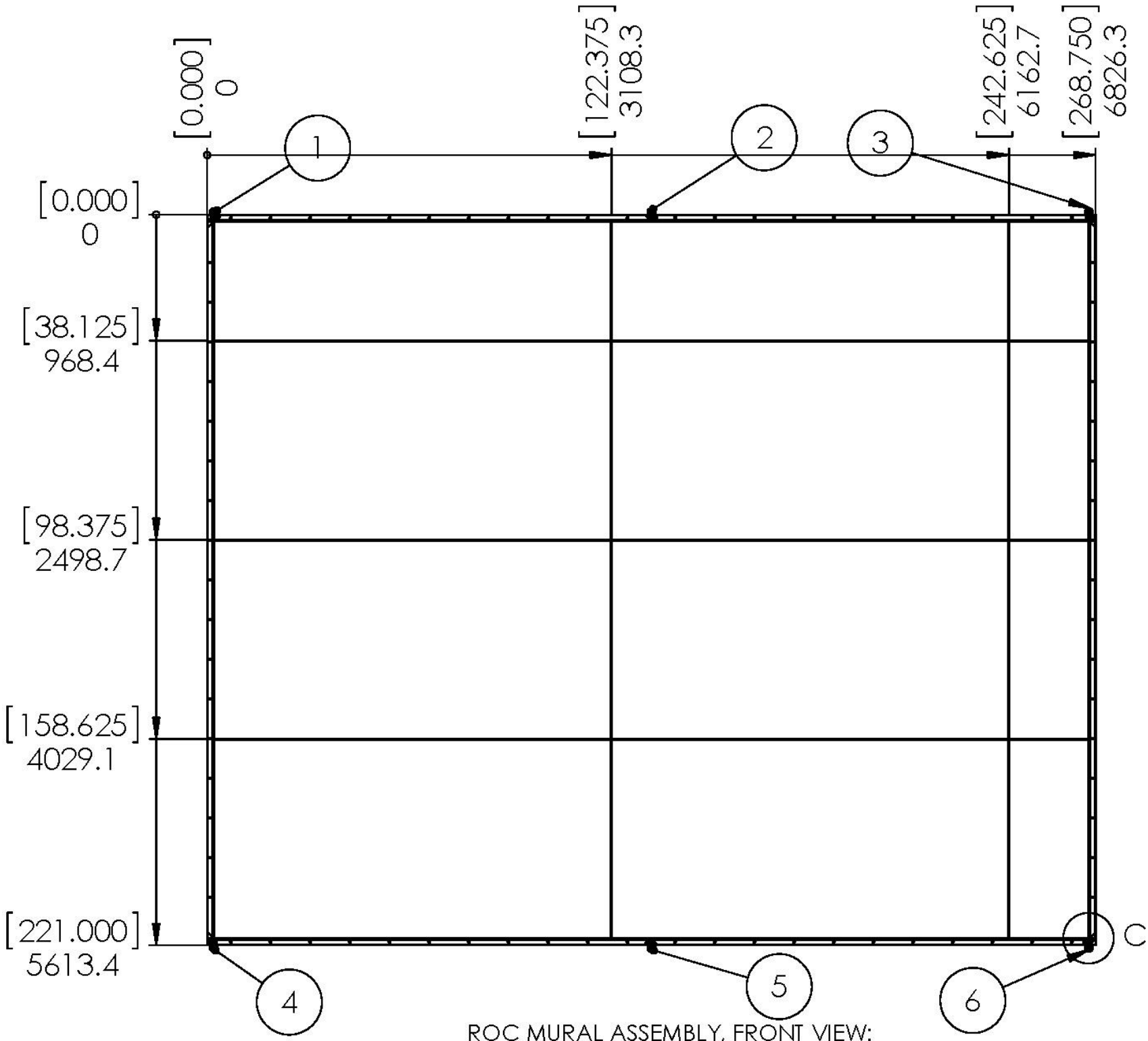
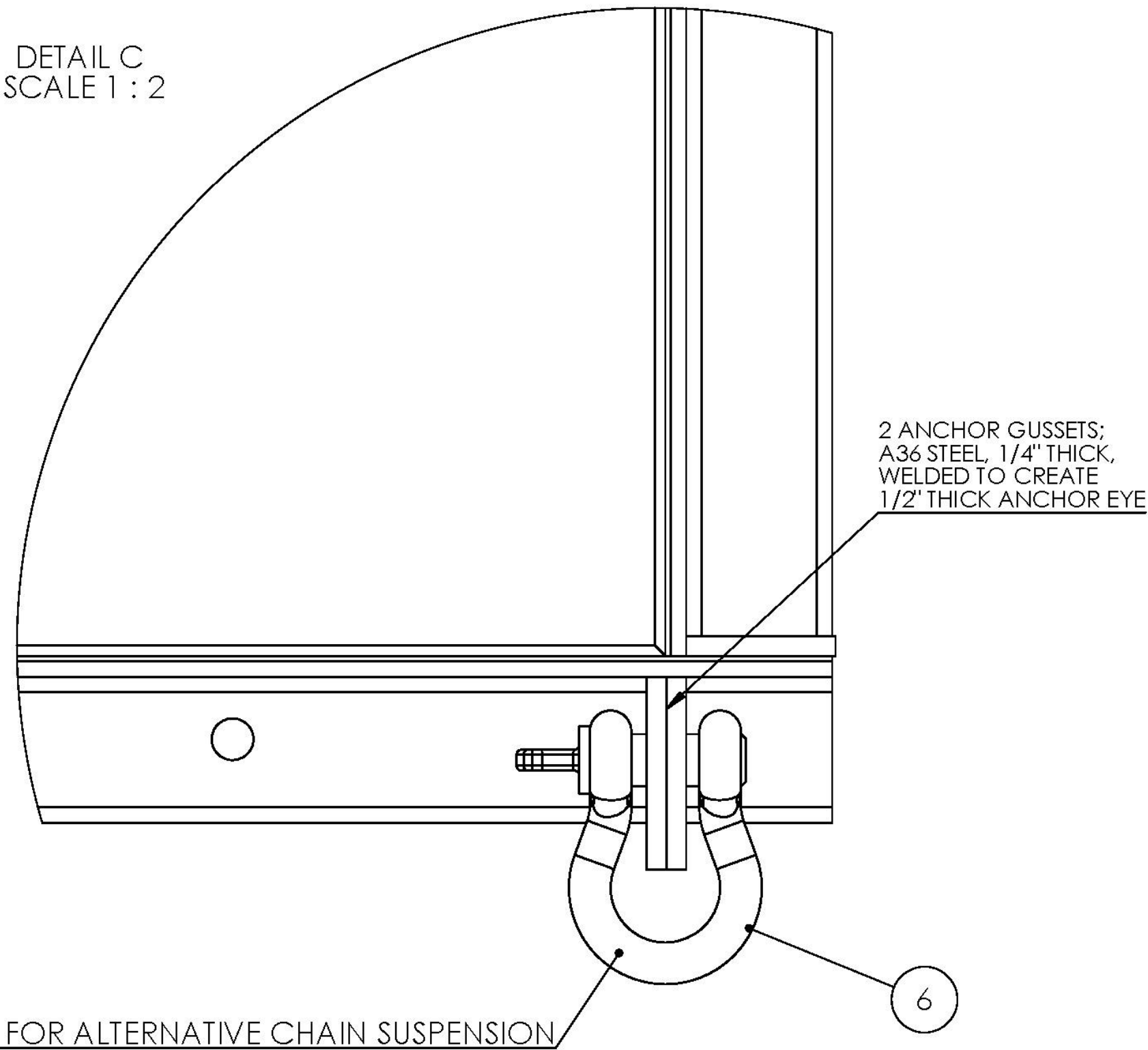
UNITS: MM [INCH]
TOL.: X.XXX =1MM;[X.XXX] = 0.03937"

NOTES:

- MURAL COMPOSED OF:
1. 4 DIFFERING SIZES OF MODULAR 10 GA ALUMINUM PANELS SUPPORTED BY SKELETAL FRAME STRUCTURE.
 2. INTERIOR FRAME STRUCTURE COMPOSED OF 1/4"X2"X2' ALUMINUM ANGLE WELDED AND BOLTED.
 3. PERIMETER FRAME STRUCTURE COMPOSED OF A36 STEEL ANGLE
 4. ALL MODULAR FRAME BOLTING CONNECTIONS COUPLED BY 3/8" BOLTING HARDWARE
 5. PREFERRED WALL MOUNTING METHOD (MASONRY SUBSTRATE): DIRECT MOUNT VIA OUTER PERIMETER MOUNT HOLES (12' O.C.); UTILIZING REDHEAD A6 EPOXY AND 3/8" CONCRETE WEDGE ANCHORS
 6. SECONDARY WALL MOUNTING METHOD (HOLLOW SUBSTRATE): DIRECT MOUNT VIA OUTER PERIMETER MOUNT HOLES (12' O.C.); UTILIZING REDHEAD 3/8" TOGGLE HOLLOW WALL ANCHORS
 7. AUXILARY WALL MOUNTING METHOD (UNSUTABLE DIRECT MOUNT SUBSTRATE): SUSPENDED BY CHAIN FROM CUSTOM ANCHOR POINTS ATTACHED ON ROOF AND LOWER CONCRETE SUPPORT BEAM


PART WEIGHT:

THAMMAVONG ARTWORKS STD TOL'S UNLESS NOTED				SEE PRINT FOR UNSPECIFIED TOL'S	
BLANKS		VARIOUS		MFG DIMS ARE FOR REFERENCE ONLY MFG DWGS COPIES ARE UNCONTROLLED SEE CUSTOMER DWG FOR KEY FEATURES	
LASER	PUNCH	SHEAR	SAW	TOL 1	TOL 2
CO. CRMTS				DESCRIPTION	
MAT'L 6061 T6 ALU.				CRMTS ROC MURAL ASSEMBLY	
DWN BY B. THAMMAVONG				DWG NUMBER	REV.
DATE 6/1/2011				ROC-MA-000	A
SCALE AS NOTED		REV. DATE 6/1/2011		THAMMAVONG ART NO.	REV.
SHEET 2 OF 3		ROC-MA-000			A



ROC MURAL ASSEMBLY, FRONT VIEW:
SCALE: 1:50

PART WEIGHT:

THAMMAVONG ARTWORKS STD TOL'S UNLESS NOTED						SEE PRINT FOR UNSPECIFIED TOL'S	
BLANKS				VARIOUS		MFG DRAWING STD'S: ANSI Y14.5M MFG DIM'S ARE FOR REFERENCE ONLY MFG DWGS COPIES ARE UNCONTROLLED SEE CUSTOMER DWG FOR KEY FEATURES	
LASER	PUNCH	SHEAR	SAW	TOL 1	TOL 2		
							
CO. CRMTS						DESCRIPTION	
MAT'L 6061 T6 ALU.						CRMTS ROC MURAL ASSEMBLY	
DWN BY B. THAMMAVONG						DWG NUMBER	REV.
DATE 6/1/2011						ROC-MA-000	A
SCALE AS NOTED				REV. 6/1/2011 DATE		THAMMAVONG ART NO.	REV.
SHEET				3 OF 3		ROC-MA-000	A

NOTES: UNITS: MM [INCH]
TOL.: X.XXX =1MM; [X.XXX] = 0.03937"

1. AUXILARY WALL MOUNTING METHOD (UNSUTABLE DIRECT MOUNT SUBSTRATE): SUSPENDED BY CHAIN FROM CUSTOM ANCHOR POINTS ATTACHED ON ROOF AND LOWER CONCRETE SUPPORT BEAM
2. CHAIN WILL BE SUSPENDED VIA SIX 3300 LB. CAPACITY SHACKLE MOUNTING ANCHORS. (DETAIL C)

